

Joint Undergraduate Program of Studies

Environmental Sciences and Engineering

Scientific and Research Performance of teaching staff

January 2026

PERFORMANCE OF TEACHING STAFF
IN SCIENTIFIC – RESEARCH & TEACHING WORK

Source: scopus.com

Table 1 documents with quantitative bibliometric data (Scopus.com) the extremely high research quality of the selected teaching staff from the participating faculties. The total number of lecturers presents a very high scientific production and impact, with a total number of publications and reports that rank the human resources of the program at the highest level internationally. The h-index and per capita performance confirm the continuous, internationally recognized research activity. This composition ensures high-quality teaching, fully connected to the cutting edge of environmental science and technology.

Table 1. Selected statistics for the participating departments. Source: Scopus.com

School	Number of Istructors	Teaching staff articles [2020-2025]	Total citations [2020-2025]	Average index [h-index]	Median index [h-index]	Average number of articles per instructor	Average number of citations per instructor
Eng.							
Engineering	13	718	21136	20.2	19	65	1922
Biology	8	735	24977	26.5	27.5	92	3122
Agriculture	14	746	24700	20	17	53	1765
Physics	13	1518	62399	32.2	31	117	4800
Chemistry	13	1623	58131	33.4	32	125	4472

Figure 1 highlights the high overall scientific footprint of the participating Schools, as reflected in the number of publications and reports of the selected lecturers. All Schools show particularly high performance, which proves the international recognition and influence of their research activity. The combined participation of the five Schools creates a strong, multidisciplinary scientific background, capable of supporting a modern and competitive curriculum. The result is a teaching potential with a strong international presence and high scientific credibility.

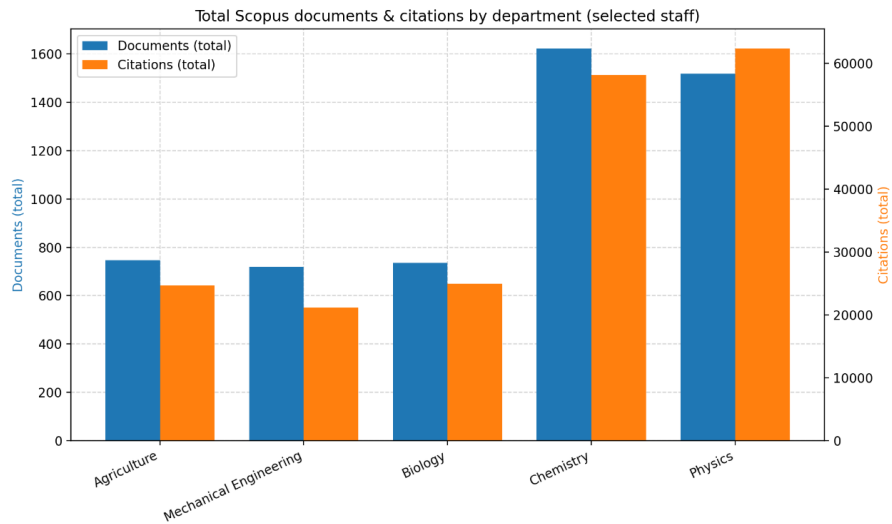


Figure 1. Total publications per participating School for the selected lecturers in blue and references in orange.

Figure 2 captures the per capita performance of faculty, confirming that the high scientific quality is not only due to the size of the Schools but also to the individual research excellence of the faculty members. The publication and citation rates per instructor are particularly high in all participating departments, demonstrating consistent and strong scientific output. This image enhances the quality assurance of the program, as students will be trained by researchers with an active international presence. At the same time, the possibility of providing modern, research-based education is documented.

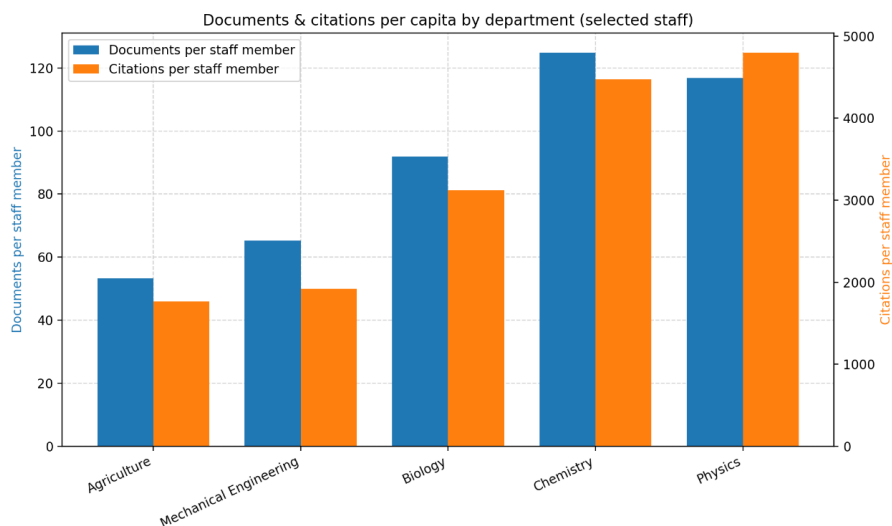


Figure 2. Per capita total publications per participating School for selected lecturers in blue and references in orange.

Figure 3 shows the distribution of teachers' h-indexes, which are an internationally accepted indicator of scientific impact and stable productivity. The h-index values show high levels in all Schools, with limited dispersion, which indicates a homogeneously high quality of teaching staff. This picture documents the continuous and timeless contribution of faculty members to the progress of science. Therefore, it is ensured that the program is based on a mature and internationally renowned scientific potential.

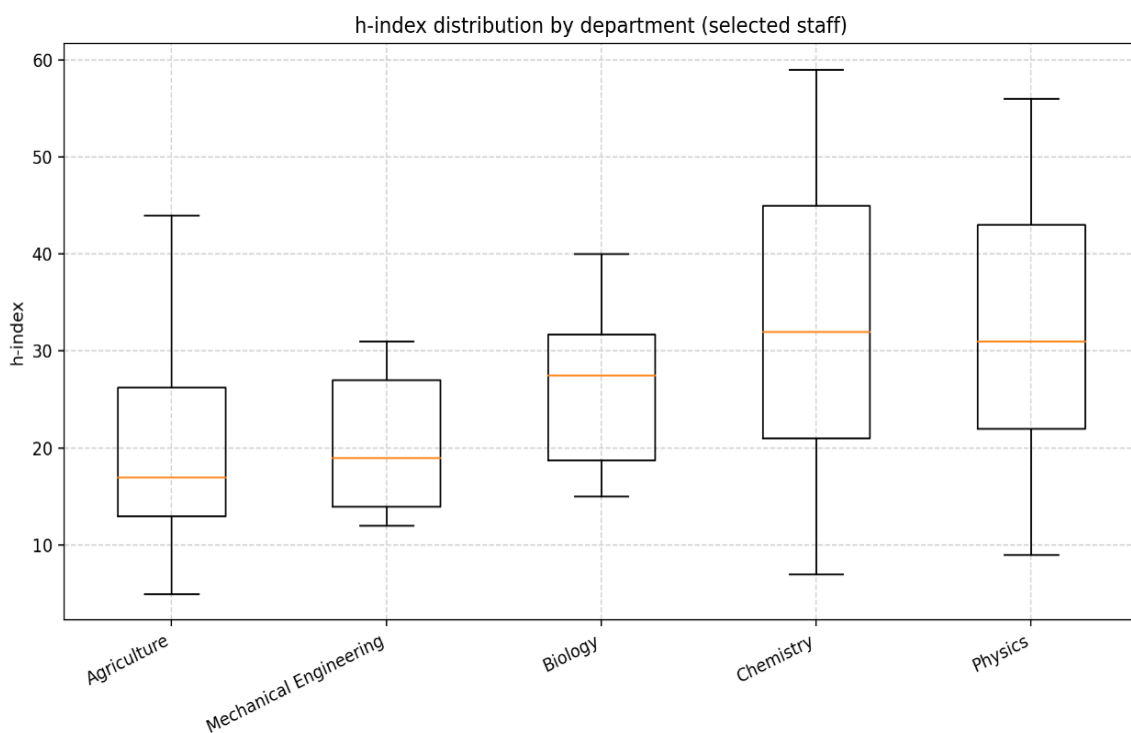


Figure 3. Box-plot of h-index indices per participating School for the selected instructors.

Figure 4 highlights the clear positive correlation between the number of publications and citations for the faculty members of the participating Schools. This finding confirms that high productivity is accompanied by strong scientific appeal and quality. The distribution of points demonstrates the existence of a dynamic core of researchers with international influence across the spectrum of the sciences involved. The result enhances the international competitiveness and academic credibility of the program.

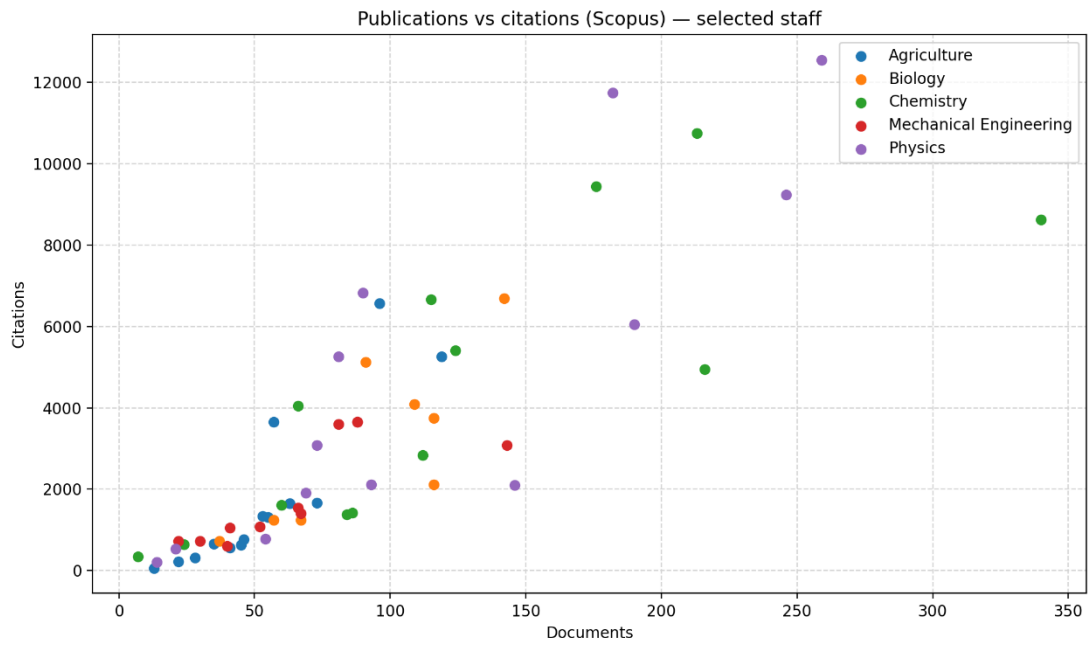


Figure 4. Correlation of total publications and reports for the selected faculty members of the participating departments.